

Solving Inequalities

 $<$ Less than $>$ Greater than \leq Less than or equal to \geq Greater than or equal to

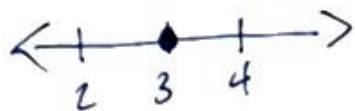
$$\begin{array}{r} t + 12 = 8 \\ -12 \quad -12 \\ \hline t = -4 \end{array}$$



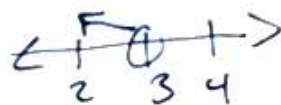
$$\begin{array}{r} t + 12 \geq 8 \\ -12 \quad -12 \\ \hline t \geq -4 \end{array}$$



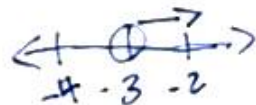
$$\begin{array}{r} 3n = 9 \\ \frac{3n}{3} = \frac{9}{3} \\ \hline n = 3 \end{array}$$



$$\begin{array}{r} 3n < 9 \\ \frac{3n}{3} < \frac{9}{3} \\ \hline n < 3 \end{array}$$



$$\begin{array}{r} -3n < 9 \\ \frac{-3n}{-3} < \frac{9}{-3} \\ \hline n > -3 \end{array}$$



Packet p. 7-8 and 15- all
9-10, save optional