

We can:

solve systems of linear equations using:

Elimination  
substitution  
Graphing

at the end of this lesson we will be able to:

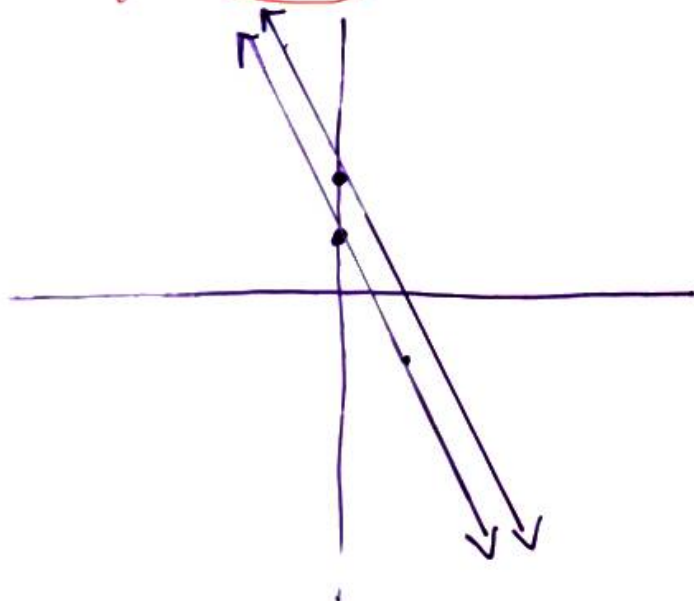
Identify inconsistent and dependent systems of linear equations.

Consider:

$$2x + y = 1$$

$$4x + 2y = 4$$

$$y = 1 - 2x$$



Solve using: substitution

$$4x + 2(1 - 2x) = 4$$

$$4x + 2 - 4x = 4$$

$$2 \neq 4$$

$$y = -2x + 1$$

$$y = -2x + 2$$